

| RGD SERIES WITH IRDS

A2L REFRIGERANT LEAK DETECTION SYSTEM

The Sensata Resonix refrigerant leak detection system is a compact unit designed to meet demanding OEM requirements and be easily integrated into HVAC & Refrigeration Equipment. Featuring the innovative Speed of Sound technology with high accuracy and fast response times. Equipped with both a dual relay and Modbus RS485 outputs, along with multi-refrigerant detection, Sensata's Resonix provides a single solution to simplify A2L refrigerant leak mitigation for a broad range of HVAC/R solutions.



Features

- Fastest response time: T28 of 2.5s, T60 of 5s (average)
- Low power consumption: <40 mA max
- Industry leading lifetime: >15 years
- Operating temperature range : -40°C to 85°C
- Short warm up time: <5 seconds
- No calibration or re-zeroing required over lifetime
- Operating humidity: 0 to 100%RH (condensing)
- IP54
- Immune to poisoning
- No false alarms due to fouling gases
- Industry leading response and start-up time
- Compliant to UL 60335-2-40 and UL 60335-2-89

Applications

- Residential and commercial air conditioning
- Heat Pumps
- Refrigeration equipment

SPECIFICATIONS

Mechanical

Materials	PA66+GF25 (plastic part) Silicon (O-ring)
Dimensions	76.75mm x 73.41mm x 21mm

Electrical

Supply voltage	9VDC - 30VDC* 18 VAC to 30 VAC
Current Requirement	10 mA (24 VDC), 22.23 mA (24 VAC)
Interface	Modbus RS485 + Relay
Relay Output	Dual relay output 24VAC / 2A rating

* Relay output is only available with a supply voltage > 9VDC

Recommended Mating Connector Components

Housing	2443729-8
Terminal	2321921-1
Rear wire seal	2321922-8
Outer O-Ring	2321920-8
Terminal position assurance	2321919-8

Environmental / Performance

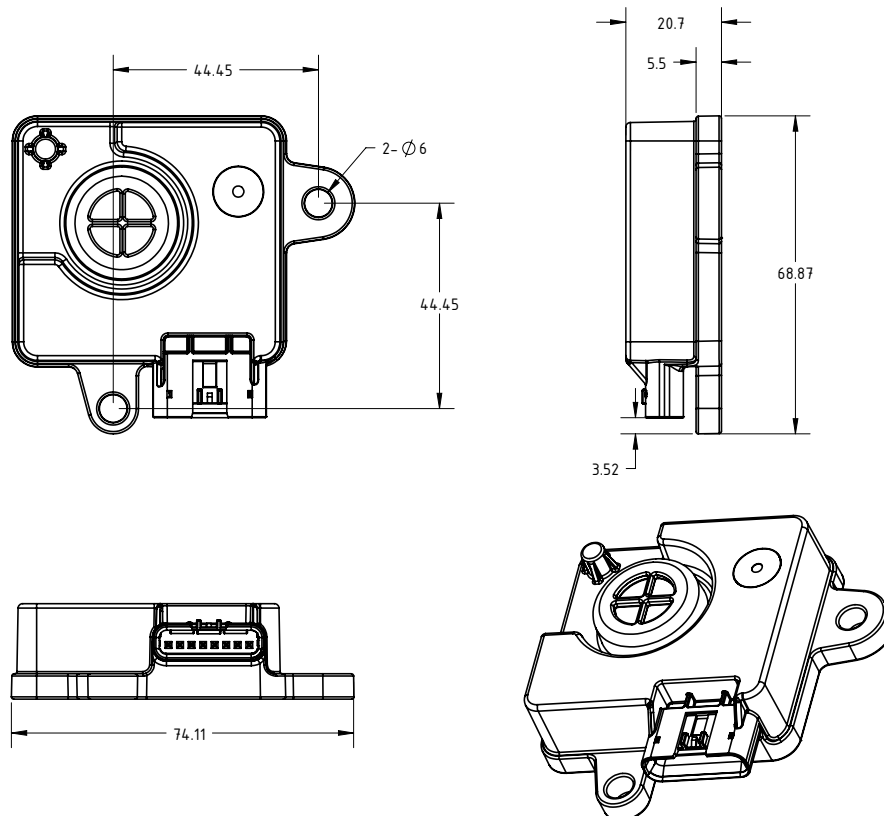
Target Gases	R32, R454B (Dual option) R454A, R454C, R455A (Triple option)
LFL Range	0 – 100%
Response Time	T28 of 2.5s, T60 of 5s (average)
Warm Up Time	< 5 seconds
Accuracy	±5% LFL
Working Temperature	-40°C to 85 °C
Storage Temperature	-40°C to 85 °C
Working Humidity	0 to 100% RH (condensing)
Working Pressure	70 to 120 KPa
Protection(EN 60529)	IP54
Fault Detection	Sensor out of range
Calibration	Factory calibration, no field calibration required
Compensation	Temperature and Humidity
Lifetime	>15 years
Conformity	UL 60335-2-40 ed.4 Annex LL, UL 60335-2-89, ROHS,REACH
Mitigation Latch	5 additional minutes after mitigation condition has been cleared

DTLV Values

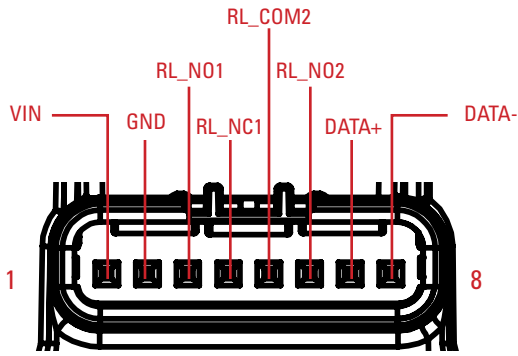
Product Variant	Target Refrigerants	DTLV Values
RGD-20RH00	R32	14.5% LFL
	R454B	12% LFL
RGD-30RH00	R454A	15.5% LFL
	R454C	14% LFL
	R455A	9.6% LFL

DIMENSIONS

Dimensions in mm



PIN OUT DIAGRAM



Pin number	Connection Name	Pin Definition	RDS Function
1	VIN	Power Supply Input	Power Supply – Line
2	GND	Power Supply Input	Power Supply – Neutral
3	RL_NO1	Relay Normally Open Contact 1	LOAD1 Contact
4	RL_NC1	Relay Normally Closed Contact 1	LOAD2 Contact
5	RL_COM2	Relay Common Contact 2	External Input for NO2
6	RL_NO2	Relay Normally Open Contact 2	LOAD3 Contact
7	DATA+	RS-485 Line	RS-485 Data+ (A)
8	DATA-	RS-485 Line	RS-485 Data- (B)

ORDERING OPTIONS

Example : RGD-20RH00

Series	RGD	-	20	R	H	00
RGD - Resonix Gas Detection Sensor						
Refrigerant						
20= R32+R454B						
30=R454A+R454C+R455A						
Output Type						
R = Relay						
Input Voltage						
H= 9-30VDC						
Customer Specific						
00= Connector End						

*Single refrigerant option will be available on request

** Relay Output is only available with a supply voltage >9VDC

AGENCY APPROVALS & CERTIFICATIONS



Sensata Technologies, Inc. ("Sensata") data sheets are solely intended to assist designers ("Buyers") who are developing systems that incorporate Sensata products (also referred to herein as "components"). Buyer understands and agrees that Buyer remains responsible for using its independent analysis, valuation, and judgment in designing Buyer's systems and products. Sensata data sheets have been created using standard laboratory conditions and engineering practices. Sensata has not conducted any testing other than that specifically described in the published documentation for a particular data sheet. Sensata may make corrections, enhancements, improvements, and other changes to its data sheets or components without notice.

Buyers are authorized to use Sensata data sheets with the Sensata component(s) identified in each particular data sheet. HOWEVER, NO OTHER LICENSE, EXPRESS OR IMPLIED, BY ESTOPPEL OTHERWISE TO ANY OTHER SENSATA INTELLECTUAL PROPERTY RIGHT, AND NO LICENSE TO ANY THIRD PARTY TECHNOLOGY OR INTELLECTUAL PROPERTY RIGHT, IS GRANTED HEREIN. SENSATA DATA SHEETS ARE PROVIDED "AS IS". SENSATA MAKES NO WARRANTIES OR REPRESENTATIONS WITH REGARD TO THE DATA SHEETS OR USE OF THE DATA SHEETS, EXPRESS, IMPLIED, OR STATUTORY, INCLUDING ACCURACY OR COMPLETENESS. SENSATA DISCLAIMS ANY WARRANTY OF TITLE AND ANY IMPLIED WARRANTIES OF MERCHANTABILITY, FITNESS FOR A PARTICULAR PURPOSE, QUIET ENJOYMENT, QUIET POSSESSION, AND NON-INFRINGEMENT OF ANY THIRD PARTY INTELLECTUAL PROPERTY RIGHTS WITH REGARD TO SENSATA DATA SHEETS OR USE THEREOF.

All products are sold subject to Sensata's terms and conditions of sale supplied at www.sensata.com SENSATA ASSUMES NO LIABILITY FOR APPLICATIONS ASSISTANCE OR THE DESIGN OF BUYERS' PRODUCTS. BUYER ACKNOWLEDGES AND AGREES THAT IT IS SOLELY RESPONSIBLE FOR COMPLIANCE WITH ALL LEGAL, REGULATORY, AND SAFETY-RELATED REQUIREMENTS CONCERNING ITS PRODUCTS, AND ANY USE OF SENSATA COMPONENTS IN ITS APPLICATIONS, NOTWITHSTANDING ANY APPLICATIONS-RELATED INFORMATION OR SUPPORT THAT MAY BE PROVIDED BY SENSATA.

Mailing Address: Sensata Technologies, Inc., 529 Pleasant Street, Attleboro, MA 02703, USA

CONTACT US

Americas

SENSATA TECHNOLOGIES INC.
529 Pleasant Street,
Attleboro, MA 02703
USA
+1 (800) 350 2727
sensors@sensata.com